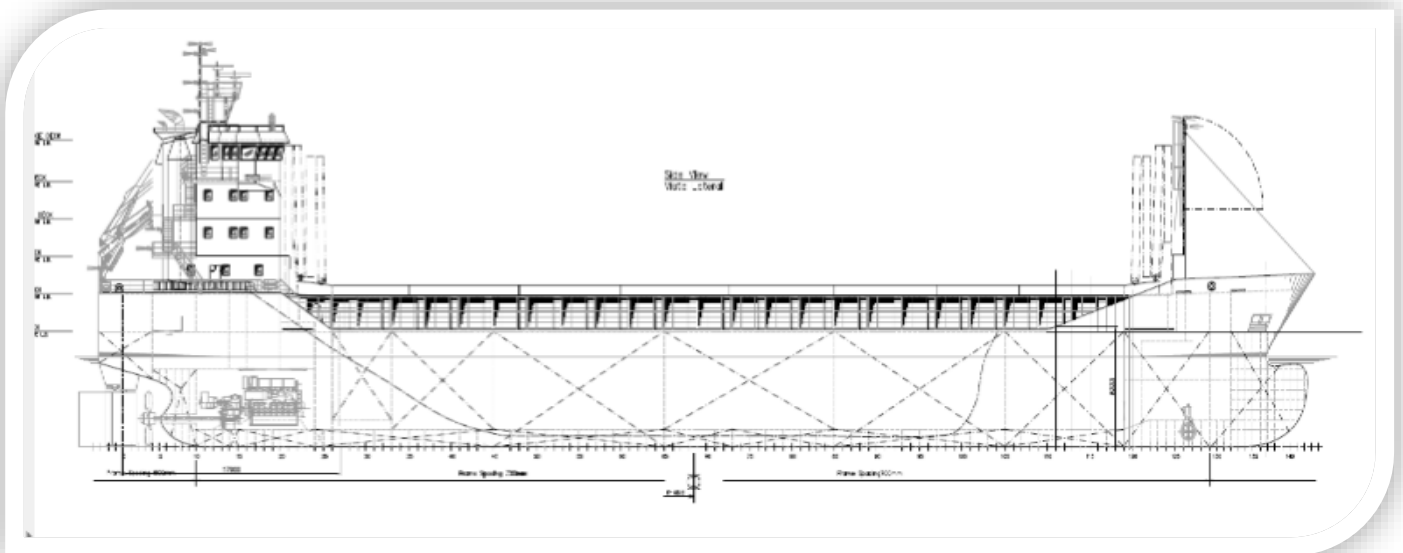


# Marine Exhaust Technology

## Balenciaga S.A.

### MX Inline Hybrid Scrubber



#### Project description

Hybrid MX-Inline Scrubber system for a new building CARGO vessel  
 Reagent: NaOH  
 Integrated silencer  
 The scrubber system can run open loop when allowed and closed loop when required.

#### Engine Information

Engine make	MAK
Engine type	8M25C
Engine rated power	2660@750RPM
Fuel type	HFO
Fuel Sulphur content	3,5%

#### Vessel specifications

Year built	
Type	
Owner	
Class	
IMO. No.	
LOA	
Beam	
DWT	
Flag	
Delivery of scrubber system	Primo 2016

#### Scrubber information

Scrubber type	Open loop
Height	5.000+1.500mm
Diameter	1600mm
Dry weight	4.000kg
Flow	19.575kg/h
Materiel	SMO254 EN1.4547 904L EN1.4539